

trade secrets

Products and tips to help you get the looks showcased in this issue

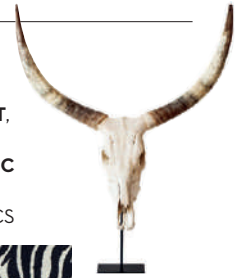
COLOUR

The use of bold colour gives each room an unconventional character. In the notable azure living room, the hue has been extended to both the walls and floor.

BELOW, FROM LEFT: 'AF003' **SERVER**, R47 100, TONIC DESIGN; MARK ALEXANDER 'EMPIRE AZURITE' **FABRIC**, R2 599 PER METRE, ROMO; DULUX **PAINT** IN 'AUTUMN FERN 6', AND 'SPRING BREEZE 1', FROM R105 PER LITRE, BUILDERS WAREHOUSE



FROM RIGHT: COWSKULL **DECORATIVE OBJECT**, R6 495, WEYLANDTS; LOUVRE 'JUXTA' **FABRIC** IN EBONY, R1 576 PER METRE, HOME FABRICS



PAGES 62-69

AFRICANA

An eclectic mix of contemporary European furniture and objets is amplified in this bold space by using quirky African design notes.

PATTERN

Don't follow rigid design rules when layering decor elements, especially when it comes to pattern. Work with a base palette, such as black and white, or any other colour pair that won't fight with strong graphics.



FROM TOP: CHRISTIAN LACROIX 'BELLE RIVES' **FABRIC**, R8 858 PER METRE, HOME FABRICS; 'STYLE PARCHMENT' **FABRIC**, R1 495 PER METRE, STUART GRAHAM; ZINC TEXTILE'S 'BERTRAND DALMATION' **FABRIC**, R2 996 PER METRE, ROMO



BELOW: BONE-INLAY **STOOL**, R6 995, WEYLANDTS; 'HENRIETTA' **CLUB CHAIR**, R5 995, BLOCK & CHISEL

FURNITURE

The key to blending anachronistic and modern furniture: shape. Consider the form and character of each item in relation to its counterparts in the room.

PRODUCTION: JULIETTE ARBICHI DE CASANOVA, FEATURE PHOTOGRAPHS: GREG COX; FLOORLAMP AND SIDETABLE PHOTOGRAPHS: LUC BOEGLY